



sharpeye[®]

surfboards

*catalog
2018*



SHAPER INFO

| | |
|---------------------|-------------------------------|
| TAIL: | Squash swallow or round tails |
| BOARD SIZE: | 5'4" to 6'6" |
| WAVE SIZE: | Small to head high |
| SKILL LEVEL: | Intermediate to advance |

BOARD DIMENSION CHART

| Size | Width | Thick | Volume | File |
|-------|--------|-------|--------|---------|
| 5'4" | 18.15" | 2.18" | 21.2L | HT254 |
| 5'6" | 18.25" | 2.21" | 22.3L | HT256 |
| 5'8" | 18.5" | 2.25" | 23.6L | HT258 |
| 5'8" | 18.65" | 2.35" | 24.9L | HT258A |
| 5'9" | 18.5" | 2.35" | 25L | HT259 |
| 5'9" | 18.75" | 2.4" | 25.9L | HT259A |
| 5'10" | 18.75" | 2.38" | 26.09L | HT2510 |
| 5'10" | 19" | 2.5" | 27.72L | HT2510A |
| 5'11" | 18.75" | 2.4" | 26.67L | HT2511 |
| 5'11" | 19.25" | 2.5" | 28.5L | HT2511A |
| 6'0" | 19" | 2.4" | 27.4L | HT260 |
| 6'0" | 19.5" | 2.5" | 29.2L | HT260A |
| 6'1" | 19.25" | 2.45" | 28.7L | HT261 |
| 6'1" | 19.5" | 2.55" | 30.25L | HT261A |
| 6'2" | 19.25" | 2.5" | 29.7L | HT262 |
| 6'2" | 19.5" | 2.6" | 31.25L | HT262A |
| 6'4" | 19.5" | 2.5" | 30.88L | HT264 |
| 6'4" | 19.75" | 2.65" | 38.12L | HT264A |
| 6'6" | 19.75" | 2.6" | 34L | HT266 |
| 6'6" | 20" | 2.75" | 35.68L | HT266A |



MODEL DESCRIPTION

This is our latest high performance shortboard. It was created for Filipe Toledo for the 2017 Trestles event. We were trying to make a variation of his Holy Toledo design for the small to medium waves. This design has a flat rocker panel under the belly with a medium flip on the nose. The tail rocker is low and continuous. The concave is subtler and the rails are boxier and fuller than the original HT. Filipe won the event riding this design.

SHAPER INFO

TAIL: SQUASH, SWALLOW OR ROUND

BOARD SIZE: 5'4" TO 6'6"

WAVE SIZE: SMALL TO HEAD HIGH

SKILL LEVEL: INTERMEDIATE TO ADVANCED

BOARD DIMENSION CHART

| Size | Width | Thick | Volume | File |
|-------|--------|-------|--------|-----------|
| 5'4" | 18.25" | 2.25" | 22.3L | #7754 |
| 5'6" | 18.5" | 2.25" | 23.3L | #7756 |
| 5'8" | 18.25" | 2.25" | 23.6L | #7758pro |
| 5'8" | 18.75" | 2.32" | 24.9L | #7758 |
| 5'9" | 18.5" | 2.35" | 25.5L | #7759pro |
| 5'9" | 19" | 2.35" | 25.9L | #7759 |
| 5'10" | 18.75" | 2.4" | 26.5L | #77510pro |
| 5'10" | 19.25" | 2.45" | 27.7L | #77510 |
| 5'11" | 18.75" | 2.4" | 26.3L | #77511pro |
| 5'11" | 19.5" | 2.5" | 29L | #77511 |
| 6'0" | 19.65" | 2.55" | 30.2L | #7760 |
| 6'1" | 19.75" | 2.6" | 31.3L | #7761 |
| 6'2" | 20" | 2.65" | 32.6L | #7762 |
| 6'3" | 20.25" | 2.68" | 33.8L | #7763 |
| 6'4" | 20.5" | 2.75" | 35.6L | #7764 |
| 6'6" | 21" | 2.88" | 39L | #7766 |



MODEL DESCRIPTION

This is Filipe's new model for 2017. It initially began as a tweak of the OK model that he's been using in the better, more powerful waves on the tour. We added more nose and tail rocker coupled with a harder edge above the fins and a slightly more subtle concave through the tail. Filipe has claimed that the #77 is the fastest design he's ever ridden.

The #77 is recommended for good punchy waves and for intermediate to experienced surfers only.

Recommended size should be the same as the surfer's height.

SHAPER INFO

| | |
|---------------------|--------------------|
| TAIL: | SWALLOW |
| BOARD SIZE: | 5'0" TO 6'4" |
| WAVE SIZE: | SMALL TO HEAD HIGH |
| SKILL LEVEL: | ALL LEVELS |

BOARD DIMENSION CHART

| Size | Width | Thick | Volume | File |
|-------|--------|-------|--------|--------|
| 5'0" | 19" | 2.35" | 24.3L | MOD50 |
| 5'2" | 19.25" | 2.4" | 26L | MOD52 |
| 5'4" | 19.5" | 2.45" | 27.8L | MOD54 |
| 5'6" | 19.75" | 2.5" | 29.6L | MOD56 |
| 5'8" | 20" | 2.5" | 31.6L | MOD58 |
| 5'10" | 20.25" | 2.65" | 34.2L | MOD510 |
| 6'0" | 20.5" | 2.7" | 36.3L | MOD60 |
| 6'2" | 20.75" | 2.75" | 38.5L | MOD62 |
| 6'4" | 21" | 2.9" | 42.3L | MOD64 |

MODEL DESCRIPTION

This is our new modern twin fin. designed to be a cross breed between the famous mr twin of the 80's and the high performance thrusters of today. Filipe wanted a board to train at home during his break in small mushy conditions and he asked for something different than what he rides on the tour. This is a design to have fun and not worry about anything.

It has an incredible speed and good drive from the combination of concaves and rail edges.

The modern2 will change the way you surf soft and small waves.



MODERN2



SHAPER INFO

TAIL: SQUASH, SWALLOW OR ROUND

BOARD SIZE: 5'4" TO 6'6"

WAVE SIZE: SMALL TO HEAD HIGH

SKILL LEVEL: ALL LEVELS

BOARD DIMENSION CHART

| Size | Width | Thick | Volume | File |
|-------|--------|-------|--------|-----------|
| 5'4" | 19" | 2.35" | 25.5L | DiscC54 |
| 5'5" | 19.25" | 2.38" | 26.5L | DiscC55 |
| 5'6" | 19.4" | 2.4" | 27.4L | DiscC56 |
| 5'7" | 19.4" | 2.42" | 27.8L | DiscC57 |
| 5'8" | 19.5" | 2.45" | 28.6L | DiscC58 |
| 5'8" | 19.75" | 2.5" | 29.9L | DiscC58A |
| 5'9" | 19.5" | 2.5" | 29L | DiscC59 |
| 5'10" | 19.75" | 2.6" | 32.2L | DiscC510 |
| 5'10" | 20" | 2.65" | 33L | DiscC510A |
| 5'11" | 19.75" | 2.65" | 33L | DiscC511 |
| 6'0" | 20" | 2.65" | 33.9L | DiscC60 |
| 6'1" | 20.25" | 2.68" | 34.4L | DiscC61 |
| 6'2" | 20.35" | 2.68" | 35.7L | DiscC62 |
| 6'3" | 20.5" | 2.7" | 36.9L | DiscC63 |
| 6'4" | 20.75" | 2.75" | 38.5L | DiscC64 |
| 6'6" | 21" | 2.9" | 40L | DiscC66 |



MODEL DESCRIPTION

This is a new addition to the disco series. The disco cheater is a copy of the disco model with all its features. The same rocker, foil and concaves. We simply re created the outline by adding more area overall making it more stable and easier to catch waves on those very small surfing days.

The disco cheater still turns like the disco and it should be a great addition to the quiver if you want a more relax design that can go on anything.

Recommended to be ridden 2 inches shorter than your height.

SHAPER INFO

TAIL: SQUASH, SWALLOW OR ROUND


BOARD SIZE: 5'4" TO 6'6"

WAVE SIZE: SMALL TO HEAD HIGH

SKILL LEVEL: INTERMEDIATE TO ADVANCED

BOARD DIMENSION CHART

| Size | Width | Thick | Volume | File |
|-------|--------|-------|--------|--------|
| 5'4" | 18" | 2.15" | 21.1L | HT54 |
| 5'6" | 18.15" | 2.21" | 22.5L | HT56 |
| 5'8" | 18.25" | 2.25" | 23.8L | HT58 |
| 5'8" | 18.5" | 2.38" | 25.3L | HT58A |
| 5'9" | 18.4" | 2.25" | 24.4L | HT59 |
| 5'9" | 18.75" | 2.4" | 26.2L | HT59A |
| 5'10" | 18.5" | 2.35" | 25.9L | HT510 |
| 5'10" | 19.0" | 2.48" | 27.8L | HT510A |
| 5'11" | 18.6" | 2.35" | 26.4L | HT511 |
| 5'11" | 19.25" | 2.5" | 28.8L | HT511A |
| 6'0" | 18.7" | 2.38" | 27.3L | HT60 |
| 6'0" | 19.25" | 2.5" | 29.3L | HT60A |
| 6'1" | 18.75" | 2.4" | 28L | HT61 |
| 6'1" | 19.5" | 2.55" | 30.6L | HT61A |
| 6'2" | 18.75" | 2.45" | 28.4L | HT62 |
| 6'2" | 19.5" | 2.6" | 31.7L | HT62A |
| 6'4" | 19.0" | 2.5" | 30.6L | HT64 |
| 6'4" | 19.75" | 2.65" | 33.6L | HT64A |
| 6'6" | 19.5" | 2.6" | 34L | HT66 |
| 6'6" | 20" | 2.75" | 36.2L | HT66A |


HOLY TOLEDO
model



MODEL DESCRIPTION

This design was created with Filipe's input. He envisioned a design that could generate maximum speed in order to enhance his aerial maneuvers. We started from the game changer design which he already liked a lot, and modified the last half of the outline making it narrower and pulling in the tail. We then increased the tail rocker and added a pronounced single concave under the back foot. The thickness was increased at the chest area and at the nose while the rails were lowered. The results were immediately noticeable. Filipe won first place at the us open and also won first place at the 6 star prime in brazil with a stellar performance riding the ht prototype.

SHAPER INFO

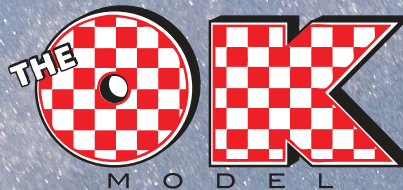
| | |
|---------------------|---------------------|
| TAIL: | ALL TAILS |
| BOARD SIZE: | 5'4" to 6'4" |
| WAVE SIZE: | WAIST HIGHT AND UP |
| SKILL LEVEL: | INTERMEDIATE TO PRO |

BOARD DIMENSION CHART

| Size | Width | Thick | Volume | File |
|-------|--------|-------|--------|--------|
| 5'4" | 18" | 2.15" | 21.2L | OK54 |
| 5'6" | 18.15" | 2.21" | 22.3L | OK56 |
| 5'8" | 18.25" | 2.25" | 23.6L | OK58 |
| 5'8" | 18.5" | 2.35" | 24.9L | OK58A |
| 5'9" | 18.25" | 2.25" | 24L | OK59 |
| 5'9" | 18.5" | 2.4" | 25.8L | OK59A |
| 5'10" | 18.5" | 2.3" | 25L | OK510 |
| 5'10" | 18.75" | 2.45" | 26.9L | OK510A |
| 5'11" | 18.6" | 2.4" | 26.4L | OK511 |
| 5'11" | 19" | 2.5" | 27.5L | OK511A |
| 6'0" | 18.75" | 2.4" | 27L | OK60 |
| 6'0" | 19" | 2.5" | 28.5L | OK60A |
| 6'1" | 18.75" | 2.45" | 28L | OK61 |
| 6'1" | 19.25" | 2.55" | 30L | OK61A |
| 6'2" | 19" | 2.5" | 29.5L | OK62 |
| 6'2" | 19.5" | 2.65" | 31.9L | OK62A |
| 6'3" | 19" | 2.5" | 30L | OK63 |
| 6'3" | 19.5" | 2.65" | 32.3L | OK63A |
| 6'4" | 19.25" | 2.6" | 31.8LL | OK64 |
| 6'4" | 19.75" | 2.7" | 33.8L | OK64A |



sharpeye
surfboards.com



MODEL DESCRIPTION

This is our new high performance model. Designed with Oliver Kutz input this model is an all around short board made for progressive surfing. this design has a low entry, continuous rocker, forward foil , deep single concave and a massive amount of tail rocker allowing very tight turns on the pocket. This board has tons of drive.



SHAPER INFO

TAIL: SQUASH OR ROUND

BOARD SIZE: 5'0" to 6'10"

WAVE SIZE: SMALL TO OVERHEAD

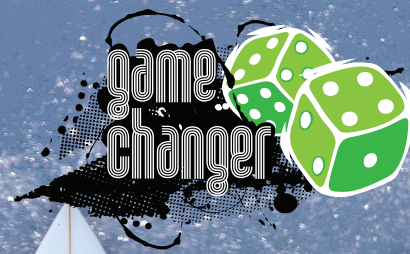
SKILL LEVEL: BEGINNER TO PRO

BOARD DIMENSION CHART

| Size | Width | Thick | Volume | File |
|-------|--------|-------|--------|----------|
| 5'6" | 18.35" | 2.21" | 23.1L | Game56 |
| 5'7" | 18.5" | 2.25" | 24.2L | Game57 |
| 5'8" | 18.75" | 2.35" | 25.9L | Game58 |
| 5'9" | 19" | 2.38" | 26.9L | Game59 |
| 5'10" | 19.25" | 2.45" | 28.5L | Game510 |
| 5'10" | 19.5" | 2.6" | 30.6L | Game510A |
| 5'11" | 19.5" | 2.5" | 29.8L | Game511 |
| 6'0" | 19.5" | 2.55" | 30.8L | Game60 |
| 6'0" | 19.75" | 2.6" | 31.8L | Game60A |
| 6'1" | 19.75" | 2.62" | 32.5L | Game61 |
| 6'2" | 20" | 2.65" | 33.7L | Game62 |
| 6'3" | 20.25" | 2.7" | 35.2L | Game63 |
| 6'4" | 20.5" | 2.75" | 36.8L | Game64 |
| 6'5" | 20.6" | 2.75" | 37.5L | Game65 |
| 6'6" | 21" | 2.88" | 40.5L | Game66 |

MODEL DESCRIPTION

The Game changer was created to bridge the gap between the Disco and the sb-10. It has low entry rocker, forward foil and deep concave between the fins. A must have board on your quiver.



SHAPER INFO

TAIL: Double wing square swallow

BOARD SIZE: 4'9" to 6'6"

WAVE SIZE: SMALL TO CHEST HIGH

SKILL LEVEL: ALL LEVELS

BOARD DIMENSION CHART

| Size | Width | Thick | Volume | File |
|-------|--------|-------|--------|------------|
| 5'4" | 18.75" | 2.25" | 23.5L | DiscTK54 |
| 5'5" | 19" | 2.3" | 24.41L | DiscTK55 |
| 5'6" | 19" | 2.35" | 25.2L | DiscTK56 |
| 5'7" | 19.13" | 2.3" | 25.7L | DiscTK57 |
| 5'8" | 19.25" | 2.35" | 26.3L | DiscTK58 |
| 5'8" | 19.5" | 2.45" | 27.8L | DiscTK58A |
| 5'9" | 19.5" | 2.38" | 27.4L | DiscTK59 |
| 5'10" | 19.5" | 2.5" | 29.2L | DiscTK510 |
| 5'10" | 19.75" | 2.6" | 30.7L | DiscTK510A |
| 5'11" | 19.5" | 2.6" | 30.8L | DiscTK511 |
| 6'0" | 19.75" | 2.6" | 31.5L | DiscTK60 |
| 6'1" | 20" | 2.6" | 32.4L | DiscTK61 |
| 6'2" | 20.25" | 2.65" | 34L | DiscTK62 |
| 6'3" | 20.5" | 2.65" | 35L | DiscTK63 |
| 6'4" | 20.75" | 2.65" | 35.8L | DiscTK64 |
| 6'6" | 21" | 2.75" | 38.5L | DiscTK66 |



MODEL DESCRIPTION

This is our new addition to the Disco family. It has the same features as the popular Disco with some changes in the tail area.

We changed the tail outline for a double wing and ended it with a square edge swallow. That generated a board that turns in a very short radius allowing more turns per wave on the small waves. Also we carved a single channel right at the end to increase grip and control.

These new changes plus the proven rocker and foil of the original Disco will push the bar on small wave high performance surfing.

It should be order 1 to 2 inches shorter than your regular short board.



sharpeye
surfboards.com

SHAPER INFO

TAIL: WIDE SQUASH, SWALLOW OR ROUND

BOARD SIZE: 4'9" to 6'6"

WAVE SIZE: SMALL TO CHEST HIGH

SKILL LEVEL: ALL LEVELS

BOARD DIMENSION CHART

| Size | Width | Thick | Volume | File |
|-------|--------|-------|--------|-----------|
| 5'4" | 18.75" | 2.25" | 23.9L | Disco54 |
| 5'5" | 19" | 2.3" | 25L | Disco55 |
| 5'6" | 19" | 2.35" | 25.9L | Disco56 |
| 5'7" | 19.13" | 2.3" | 26.1L | Disco57 |
| 5'8" | 19.25" | 2.35" | 27L | Disco58 |
| 5'8" | 19.5" | 2.45" | 28.5L | Disco58A |
| 5'9" | 19.5" | 2.38" | 28.6L | Disco59 |
| 5'10" | 19.5" | 2.5" | 30L | Disco510 |
| 5'10" | 19.75" | 2.6" | 31.5L | Disco510A |
| 5'11" | 19.5" | 2.6" | 31.5L | Disco511 |
| 6'0" | 19.75" | 2.6" | 32.4L | Disco60 |
| 6'1" | 20" | 2.6" | 33.3L | Disco61 |
| 6'2" | 20.25" | 2.65" | 34.9L | Disco62 |
| 6'3" | 20.5" | 2.65" | 35.8L | Disco63 |
| 6'4" | 20.75" | 2.65" | 36.7L | Disco64 |
| 6'6" | 21" | 2.75" | 39.5L | Disco66 |



MODEL DESCRIPTION

This is our most popular design. created for small to medium surf. it is a high performance small wave board that allows you to surf like your normal short board. the bottom has the most amount of rocker than all other small wave designs and the outline is wider than the glider model. you will go fast and turn tight on those small but fun days. it should be order 4 to 6 inches smaller than your regular short board.



sharpeye
surfboards.com

SHAPER INFO

TAIL: ROUND ONLY

BOARD SIZE: 5'4" to 6'6"

WAVE SIZE: SMALL TO HEAD HIGH

SKILL LEVEL: ALL LEVELS

BOARD DIMENSION CHART

| Size | Width | Thick | Volume | File |
|-------|--------|-------|--------|-----------|
| 5'4" | 18.25" | 2.25" | 22.3L | Disif54 |
| 5'5" | 18.4" | 2.32" | 23.1L | Disif55 |
| 5'6" | 18.5" | 2.35" | 23.9L | Disif56 |
| 5'7" | 18.65" | 2.35" | 24.5L | Disif57 |
| 5'8" | 18.75" | 2.35" | 25L | Disif58 |
| 5'8" | 19" | 2.45" | 26.4L | Disif58A |
| 5'9" | 18.75" | 2.4" | 25.84L | Disif59 |
| 5'9" | 19.25" | 2.5" | 27.5L | Disif59A |
| 5'10" | 19" | 2.5" | 27.5L | Disif510 |
| 5'10" | 19.25" | 2.6" | 29.1L | Disif510A |
| 5'11" | 19.25" | 2.5" | 28.2L | Disif511 |
| 6'0" | 19.4" | 2.6" | 30L | Disif60 |
| 6'1" | 19.5" | 2.6" | 30.5L | Disif61 |
| 6'2" | 19.65" | 2.65" | 31.9L | Disif62 |
| 6'3" | 19.7" | 2.65" | 32.3L | Disif63 |
| 6'4" | 19.75" | 2.7" | 33.7L | Disif64 |



sharpeye
surfboards.com



MODEL DESCRIPTION

This is for all of you disco lovers!

A disco model adjusted to handle good waves, we kept a similar bottom configuration and rocker as the disco with some minor changes to increase the drive and control on larger surf. Should be ordered 1 to 2 inches shorter than your short board.



SHAPER INFO

| | |
|---------------------|-----------------|
| TAIL: | SQUASH |
| BOARD SIZE: | 5'4" to 6'4" |
| WAVE SIZE: | SMALL to MEDIUM |
| SKILL LEVEL: | ALL LEVELS |

BOARD DIMENSION CHART

| Size | Width | Thick | Volume | File |
|-------|--------|-------|--------|----------|
| 5'4" | 19" | 2.35" | 25.7L | Manta54 |
| 5'5" | 19.25" | 2.35" | 26.4L | Manta55 |
| 5'6" | 19.5" | 2.4" | 27.8L | Manta56 |
| 5'7" | 19.75" | 2.4" | 28.6L | Manta57 |
| 5'8" | 19.75" | 2.45" | 29.6L | Manta58 |
| 5'9" | 20" | 2.45" | 30.5L | Manta59 |
| 5'10" | 20.25" | 2.5" | 31.9L | Manta510 |
| 5'11" | 20.5" | 2.5" | 32.8L | Manta511 |
| 6'0" | 20.5" | 2.5" | 33.3L | Manta60 |
| 6'1" | 20.75" | 2.5" | 34.2L | Manta61 |
| 6'2" | 21" | 2.65" | 37.2L | Manta62 |
| 6'3" | 21.25" | 2.65" | 38.1L | Manta63 |
| 6'4" | 21.5" | 2.75" | 40.5L | Manta64 |

MODEL DESCRIPTION

Created with the concept of more volume, shorter size = more fun. It has a progressive rocker which allows modern surfing and a full nose outline and a double wing squash tail. this board has tons of speed and turns sharp on the small waves. Should be ordered 2 to 4 inches shorter than your normal shortboard and ½ to 1 inch wider.



sharpeye
surfboards.com



SHAPER INFO

TAIL: SQUASH, ROUND AND DIAMOND

BOARD SIZE: 5'0" - 6'4" IT SHOULD BE ORDERED 3 TO 5 INCHES SHORTER THEN YOUR HEIGHT.

WAVE SIZE: FLATT TO WAIST HIGH

SKILL LEVEL: ALL LEVELS

BOARD DIMENSION CHART

| Size | Width | Thick | Volume | File |
|-------|--------|-------|--------|---------|
| 5'0" | 19.5" | 2.45" | 27L | SOLE50 |
| 5'2" | 19.5" | 2.45" | 27.9L | SOLE52 |
| 5'4" | 19.65" | 2.5" | 29.6L | SOLE54 |
| 5'5" | 19.75" | 2.5" | 30.2L | SOLE55 |
| 5'6" | 20" | 2.5" | 31.1L | SOLE56 |
| 5'7" | 20.5" | 2.65" | 34.7L | SOLE57 |
| 5'8" | 20.75" | 2.65" | 35.3L | SOLE58 |
| 5'9" | 21" | 2.7" | 37L | SOLE59 |
| 5'10" | 21" | 2.75" | 38.2L | SOLE510 |
| 5'11" | 21.25" | 2.75" | 39.2L | SOLE511 |
| 6'0" | 21.5" | 2.75" | 40.2L | SOLE60 |
| 6'2" | 21.75" | 2.88" | 43.8L | SOLE62 |
| 6'4" | 22" | 3.0" | 47.3L | SOLE64 |

MODEL DESCRIPTION

Created for the good times. This design has a rocker that is as flat as a sole fish. It has a deep double concave vee throughout the entire bottom and is equipped with a 5 fin set up. The Sole will get you into the waves easy and it will have a smooth ride.



SHAPER INFO

TAIL: SQUASH, SWALLOW OR ROUND

BOARD SIZE: 5'0" to 6'10"

WAVE SIZE: MEDIUM TO HEAD HIGH

SKILL LEVEL: INTERMEDIATE TO PRO

BOARD DIMENSION CHART

| Size | Width | Thick | Volume | File |
|-------|--------|-------|--------|---------|
| 5'4" | 18.15" | 2.18" | 21.6L | SB154 |
| 5'6" | 18.21" | 2.21" | 22.5L | SB156 |
| 5'8" | 18.25" | 2.25" | 23.8L | SB158 |
| 5'8" | 18.5" | 2.35" | 25.2L | SB158A |
| 5'9" | 18.4" | 2.35" | 25.4L | SB159 |
| 5'9" | 18.6" | 2.45" | 26.7L | SB159A |
| 5'10" | 18.5" | 2.38" | 26.1L | SB1510 |
| 5'10" | 187.5" | 2.5" | 27.8L | SB1510A |
| 5'11" | 18.75" | 2.45" | 27.6L | SB1511 |
| 5'11" | 19.25" | 2.55" | 29.5L | SB1511A |
| 6'0" | 19" | 2.5" | 29L | SB160 |
| 6'1" | 19.25" | 2.5" | 29.8L | SB161 |
| 6'2" | 19.25" | 2.55" | 30.2L | SB162 |
| 6'3" | 19.5" | 2.6" | 32.2L | SB163 |

MODEL DESCRIPTION

It has been one of the choices of the top pros in the past. the sb-1's rocker will push performance surfing to the highest level. it has a moderate nose entry with an extreme tail rocker, subtle single concave and low boxy rails. It performs incredibly well in good waves as well as average surf.



SB1



SHAPER INFO

TAIL: SWALLOW

BOARD SIZE: 4'9" to 6'6"

WAVE SIZE: SMALL TO CHEST HIGH

SKILL LEVEL: ALL LEVELS

BOARD DIMENSION CHART

| Size | Width | Thick | Volume | File |
|-------|--------|-------|--------|----------|
| 5'4" | 18.75" | 2.35" | 25.9L | Blow54 |
| 5'5" | 19" | 2.4" | 27.2L | Blow55 |
| 5'6" | 19" | 2.4" | 27.6L | Blow56 |
| 5'7" | 19.13" | 2.45" | 28.8L | Blow57 |
| 5'8" | 19.25" | 2.5" | 30L | Blow58 |
| 5'9" | 19.5" | 2.5" | 30.8L | Blow59 |
| 5'10" | 19.5" | 2.5" | 31.3L | Blow510 |
| 5'10" | 19.75" | 2.65" | 33.5L | Blow510A |
| 5'11" | 19.75" | 2.55" | 32.8L | Blow511 |
| 6'0" | 19.75" | 2.6" | 33.9L | Blow60 |
| 6'1" | 20" | 2.6" | 35.1L | Blow61 |
| 6'2" | 20.25" | 2.65" | 36.4L | Blow62 |
| 6'3" | 20.5" | 2.75" | 38.7L | Blow63 |
| 6'4" | 20.75" | 2.88" | 41.6L | Blow64 |

MODEL DESCRIPTION

This design was introduced to allow the surfer to tackle small surfing Conditions and rip just like if he was using his shorty. It has a flatt nose entry rocker, full nose outline and an accelerated tail curve.

The rails are normal and the deck is domed allowing easy rail to rail moves. It can be order with 5 fin set up



SHAPER INFO

TAIL: WING SWALLOW

BOARD SIZE: 5'0" to 6'6"

WAVE SIZE: SMALL TO MEDIUM

SKILL LEVEL: ALL LEVELS

BOARD DIMENSION CHART

| Size | Width | Thick | Volume | File |
|-------|--------|-------|--------|-------|
| 5'0" | 19.25" | 2.28" | 23.9L | MF50 |
| 5'2" | 19.25" | 2.32" | 25.1L | MF52 |
| 5'4" | 19.5" | 2.38" | 26.9L | MF54 |
| 5'6" | 19.75" | 2.42" | 28.6L | MF56 |
| 5'7" | 20" | 2.5" | 30.6L | MF57 |
| 5'8" | 20" | 2.55" | 31.4L | MF58 |
| 5'9" | 20.25" | 2.6" | 32.9L: | MF59 |
| 5'10" | 20.5" | 2.65" | 34.4.L | MF510 |
| 5'11" | 20.75" | 2.75" | 36.7L | MF511 |
| 6'0" | 21" | 2.75" | 37.6L | MF60 |
| 6'2" | 21.25" | 2.75" | 39L | MF62 |
| 6'4" | 21.5" | 2.88" | 42.6L | MF64 |

MODEL DESCRIPTION

Designed for very small surfing conditions. It was inspired by the early 80's twin fin designs. it has a small trailer fin increasing the drive and projection.it should be ordered 3 to 5 inches shorter than your normal board and ½ to 1 inch wider.it is also available with four channel bottom.



SHAPER INFO

| | |
|---------------------|-----------------|
| TAIL: | WING SWALLOW |
| BOARD SIZE: | 5'0" to 6'6" |
| WAVE SIZE: | SMALL TO MEDIUM |
| SKILL LEVEL: | ALL LEVELS |

BOARD DIMENSION CHART

| Size | Width | Thick | Volume | File |
|-------|--------|-------|--------|--------|
| 5'0" | 19" | 2.28" | 24.2L | TFP50 |
| 5'2" | 19.25" | 2.35" | 26.1L | TFP52 |
| 5'4" | 19.5" | 2.35" | 27.2L | TFP54 |
| 5'6" | 19.75" | 2.4" | 29.1L | TFP56 |
| 5'7" | 19.8" | 2.45" | 30.2L | TFP57 |
| 5'8" | 20" | 2.5" | 31.6L | TFP58 |
| 5'9" | 20." | 2.5" | 32.1L | TFP59 |
| 5'10" | 20.25" | 2.6" | 34.3L | TFP510 |
| 5'11" | 20.25" | 2.6" | 34.7L | TFP511 |
| 6'0" | 20.5" | 2.7" | 37L | TFP60 |
| 6'2" | 20.75" | 2.75" | 39.2L | TFP62 |
| 6'4" | 21" | 2.75" | 40.8L | TFP64 |

MODEL DESCRIPTION

Designed for very small surfing conditions. It was inspired by the early 80's twin fin designs. it has a small trailer fin increasing the drive and projection.it should be ordered 3 to 5 inches shorter than your normal board and ½ to 1 inch wider.it is also available with four channel bottom.





SG1

MODEL DESCRIPTION

It was developed targeting large and hollow surf. The bottom is equipped with a reverse vee, double concave combo. It has solid control but is still loose in the pocket. Don't book your next surf trip without an SG-1.

SHAPER INFO

| | |
|---------------------|---------------------------------------|
| TAIL: | ROUND PIN-ROUND TAIL AND BABY SWALLOW |
| BOARD SIZE: | 6'0" TO 7'6" |
| WAVE SIZE: | MEDIUM TO DOUBLE OVERHEAD |
| SKILL LEVEL: | ADVANCED TO PRO |

BOARD DIMENSION CHART // Twin Fin Pig

| Size | Width | Thick | Volume | File |
|-------|--------|-------|--------|--------|
| 6'0" | 18.25" | 2.26" | 25L | SG160 |
| 6'1" | 18.5" | 2.32" | 26.4L | SG161 |
| 6'2" | 18.5" | 2.4" | 28L | SG162 |
| 6'4" | 18.75" | 2.45" | 30L | SG164 |
| 6'6" | 19" | 2.5" | 31.5L | SG166 |
| 6'8" | 19.25" | 2.5" | 33L | SG168 |
| 6'10" | 19.5" | 2.65" | 36L | SG1610 |
| 7'0" | 19.5" | 2.65" | 37L | SG170 |
| 7'2" | 19.6" | 2.65" | 38L | SG172 |
| 7'4" | 19.75" | 2.65" | 39.5L | SG174 |
| 7'6" | 19.75" | 2.75" | 41.8L | SG176 |

ORDER FORM



BOARD #

SHAPING INFO

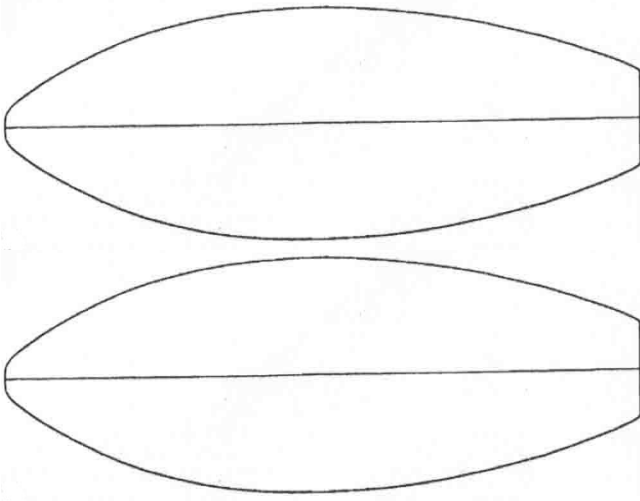
Order Date

Due Date

1

- #77
- Blow Fish
- Disco
- Disco Cheater
- Disco Inferno
- Disco Tech
- Game Changer
- GUN 1
- Holy Toledo
- Manta
- MF
- Modern 2
- OK Model
- SB-1
- Semi Gun
- Sole
- TFP

TOP BOTTOM



Length:

Width :

Thickness :

Volume:

Comments:

Rail :

Tail :

Computer File :

Name :

Email :

Cellular :

Type of wave :

Exp Level :

Age : Male Female

Weight : Male Female

Height :

AIRBRUSH

Clear Color

Digital Graphic Tail Graphic

Other :

LAMINATION

Laminates : Color :

Team Light 4 oz S + 4 oz 2/3 + 4 oz

Light 4 oz + 4 oz + 4 oz

Standard 5 oz + 4 oz + 4 oz

Strong 6 oz + 4 oz + 6 oz

Carbon Stips Tail Bottom

Custom + +

FINS

FCS 2 Fusion

Future

Glass ons

FINISH

Mop & Glow

Dolphin Skin

Gloss and Polish

Special instruction :

SHIPPING INFO

Shipping Address :

City :

State :

Phone :

Zip Code :

Special Instruction :

CREDIT CARD CHARGE AUTHORIZATION

(All informations must be provided)

Cardholder's name :

Card Number:

Provide Exp. date

Cardholder's Billing Address :

City :

Zip Code :

State :

Country :

Please sign X

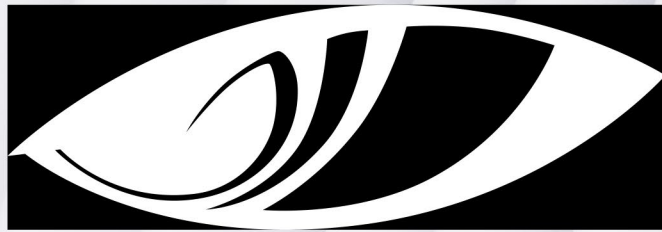
CVC #



TOTAL ORDER

| | |
|--------------|------|
| Price | \$ |
| Color | \$ |
| Extras | \$ |
| Packing | \$ |
| CA Sales Tax | \$ |
| Shipping | \$ |
| TOTAL | \$ |
| Trade-in or | |
| Deposit | (\$ |
| Balance |) \$ |

THANKS ! the final step FAX THIS ORDER to (619) 542-0307 or by EMAIL : marciozouvi@gmail.com or
by mail SHARPEYE SURFBOARDS 3351 Hancock st. San Diego CA 92110



sharpeye |
surfboards.com

3351 HANCOCK STREET
SAN DIEGO, CA, 92110
(619) 542-1088